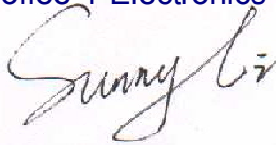




RoHS TEST REPORT LIST

Product : **LED Controller**
Model : NS-CON-IR44B-3CH-LV, NS-ZJFJ-3CH-LV, NS-XDIMMER-1CH-LV,
NS-RFDIMMER-1CH-LV, NS-TM06, NS-TM08, NS-CONSYN-RFXB(T)-3CH,
NS-CON-IR24B-3CH-LV, NS-CONAudio-RF8B(T)-3CH-LV,
NS-CON-RF20B(H)-3CH-LV, NS-CON-RF20B(C)-3CH-LV,
NS-CON-RF20B(SJ)-3CH-LV, NS-CON-TRF8B(H)-3CH-LV,
NS-CON-TRF8B(T)-3CH-LV, NS-WF100, NS-USB-DMX
Applicant : **NEWSTAR LED CO., LIMITED**
Address : 7/F, Block A, YuShan Industrial Park, Songbai Road, ShiYan Town,
Bao'An, ShenZhen, China, 518108
Manufacturer : **NEWSTAR LED CO., LIMITED**
Address : 7/F, Block A, YuShan Industrial Park, Songbai Road, ShiYan Town,
Bao'An, ShenZhen, China, 518108
Trademark : 
Report No. : CTE14IR-189R
Issue Date : September 02, 2014

Authorized by :
For Coffee-T Electronics Technology Co., Ltd.



Sunny Li
Senior Manager

Test data listed in this report are based on the reports of the separated parts submitted by applicant. Coffee-T is not responsible for the authenticity of all the test data of separated part.

The test report is valid for above tested sample only and shall not be reproduced in part without written approval of the Coffee-T Electronics Technology Co., Ltd.



Testing Required:

- 1) In accordance with the RoHS Directive 2011/65/EU Annex II.
- 2) As specified by client, to determine Lead, Cadmium, Mercury, Hexavalent Chromium, PBBs and PBDs content in the selected materials (see remark) of submitted sample with reference to Directive 2011/65/EU of the European Parliament and of The Council of 8 June 2011 (ROHS, Previously 2002/95/EC)

Test Standards:

Testing Item	Pretreatment method	Measuring method	Report Limit
Lead (Pb)	IEC 62321, Ed1:2008	IEC62321 (ICP-OES)	2ppm
Cadmium (Cd)	IEC 62321, Ed1:2008	IEC62321 (ICP-OES)	2ppm
Mercury (Hg)	IEC 62321, Ed1:2008	IEC62321 (ICP-OES)	2ppm
Chromium (Cr ⁶⁺)	IEC 62321, Ed1:2008 Annex C	IEC62321 (UV-VIS)	0.02ppm* 2ppm
PBBs/ PBDEs	IEC 62321, Ed1:2008 Annex A	IEC62321 (GC-MS)	5ppm

Note: * 0.02ppm refers to the MQL of sample extraction liquid.

Remarks:

1. The test report is valid for above tested sample only and shall not be reproduced in part without written approval of the company.
2. Characterization & Condition of sample: Normal.
3. Ambient Condition During Testing: (15~22)°C, (50~68) % RH.

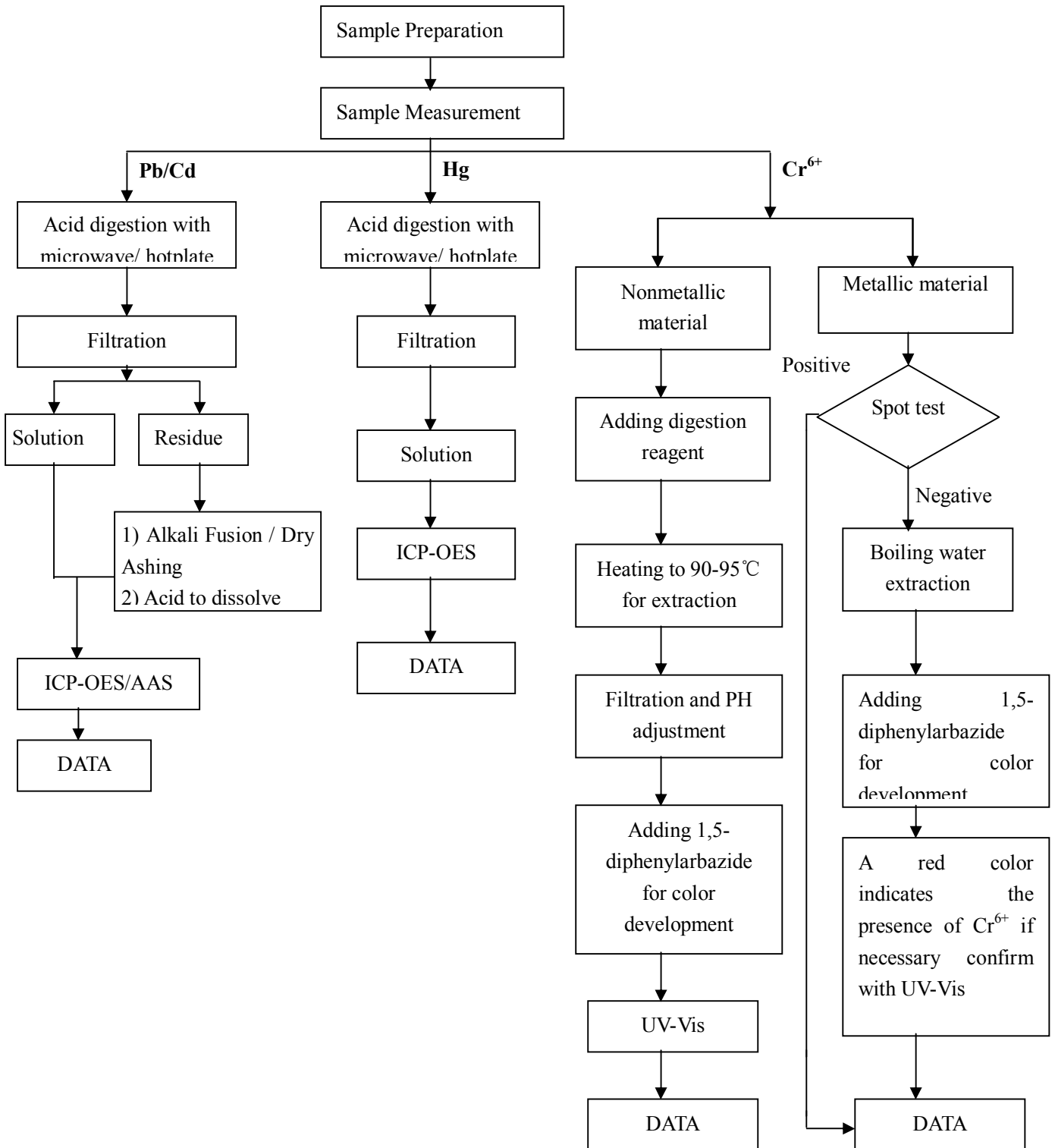
Conclusion:

Based on the performed tests on submitted sample(s), the results of Cadmium, Lead, Mercury, Hexavalent Chromium Cr(VI), PBBs and PBDEs comply with the limits as set by RoHS Directive 2011/65/EU Annex II; recasting 2002/95/EC.



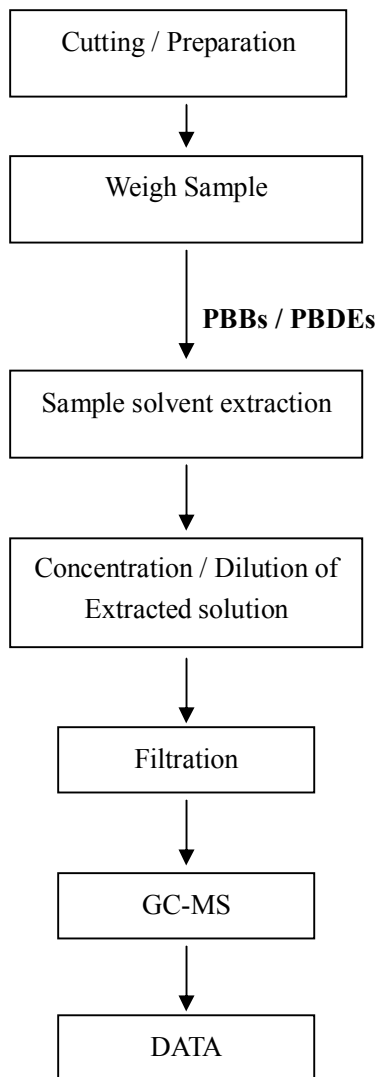
Test flow:

1. To Determine Lead/Cadmium/Mercury/ Hexavalent Chromium Content:





2. To Determine PBBs/PBDEs Content:





Coffee-T Electronics Technology Co Ltd

No.	Parts/material name	SUPPLIER	Test company	Report No.
1	LED	SHENZHEN CHUNFA PHOTOELECTRICITY TECHNOLOGY CO.,LTD	SGS	CANEC1004548002
2	Lead free solder tin thread	SHENZHEN AIJIAFA INDUSTRIAL CO., LTD	SGS	CANEC1001321005
3	PCB	SHENZHEN HONGMY PRECISION CIRCUIT CO., LTD	SGS	GZ1011180185/CHEM
4	Silicone rubber wire (red)	NIZING ELECTRIC CO., LTD	SGS	GZ1001003376/CHEM
5	Tinned round copper wire	(GUXI) GUANGXIN ELECTRICIAN MATERIAL CO., LTD	CTI	SHR10122031492001C
6	Bare copper conductor	JIANGXI COPPER GROUP (GUIXI) GUANGXIN ELECTRICIAN MATERIAL CO., LTD	CTI	SHR10101131491001C
7	Aluminum base PCB	SHENZHEN XINGTONGBU TECHNOLOGY CO., LTD.	CTS	CTSGZ101030-01977-C
8	Aluminum radiator	DONGGUANG AODA ALUMINUM CO., LTD	SGS	CANEC1001519601
9	Lead-free tin wire	SHENZHEN TONGCHUANG ERA SOLDER TIN TECHNOLOGY CO., LTD	SGS	CANEC1006247604
10	Resistor	LIZ ELECTRONICS (KUNSHAN)CO., LTD	SGS	SH8169434-1/CHEM
11	Chip resistor	PUTIAN HUADA ELECTRONIC CO., LTD	SGS	GZ1002011981/CHEM
12	Transistors	CHANGZHOU XINQU JIAXUN ELECTRONIC EQUIPMENT CO., LTD	SGS	GZ1008110501/CHEM
13	Triode	JIANG XI SHANG SHENG ELECTRONIC CO., LTD	SGS	GZ1009143823/CHEM

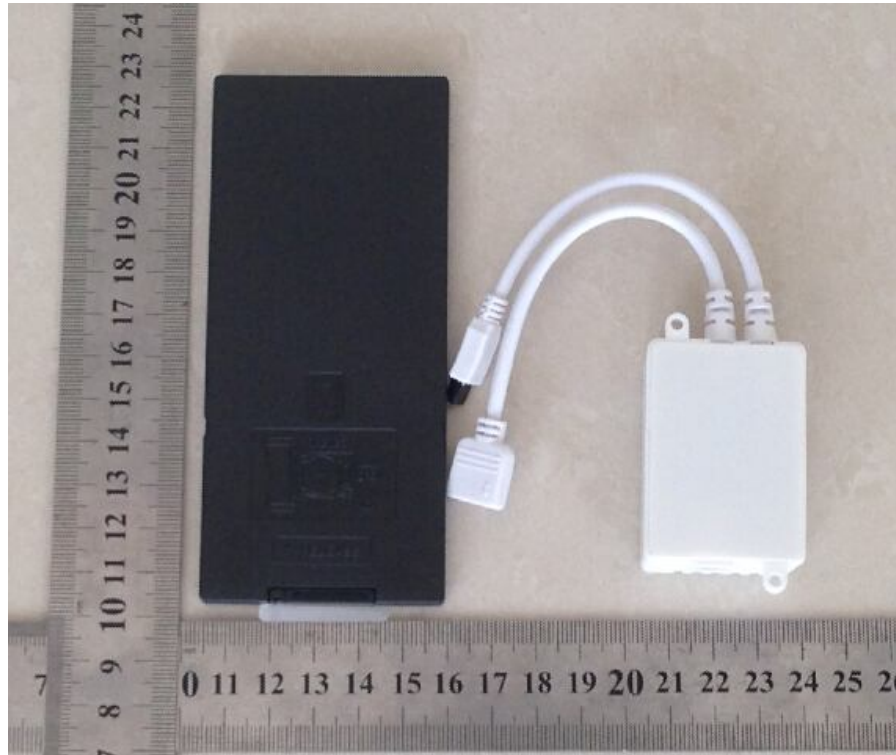


Test Item		Pb	Cd	Hg	Cr(VI)	PBBs	PBDEs	
Unit		ppm	ppm	ppm	ppm	ppm	ppm	
Method detection limit		2	2	2	2	5	5	
1	LED	Transparent plastic	N.D.	N.D.	N.D.	N.D.	N.D.	
		Silvery metal pin	N.D.	N.D.	N.D.	Negative	--	--
2	Lead free solder tin thread	Silvery metal wire	N.D.	N.D.	N.D.	N.D.	--	--
3	PCB	Green "PCB"(mixed)	N.D.	N.D.	N.D.	N.D.	N.D.	N.D.
4	Silicone rubber wire (red)	Red to be w/ white printing	N.D.	N.D.	N.D.	N.D.	N.D.	N.D.
5	Tinned round copper wire		N.D.	N.D.	N.D.	N.D.	N.D.	N.D.
6	Bare copper conductor		N.D.	N.D.	N.D.	N.D.	N.D.	N.D.
7	Aluminum base PCB							
8	Aluminum radiator		N.D.	N.D.	N.D.	N.D.	N.D.	N.D.
9	Lead-free tin wire		N.D.	N.D.	N.D.	Negative	N.D.	N.D.
10	Resistor		N.D.	N.D.	N.D.	N.D.	N.D.	N.D.
11	Chip resistor		N.D.	N.D.	N.D.	N.D.	--	--
12	Transistors		N.D.	N.D.	N.D.	N.D.	N.D.	N.D.
13	Triode		N.D.	N.D.	N.D.	Negative	--	--

- Note:
- (1) N.D.= Not detected (<MDL)
 - (2) N.C.= Not conducted (<MDL)
 - (3) MDL=Method Detection Limit
 - (4) ppm = mg/kg
 - (5) Negative = Absence of CrVI coating, Positive = Presence Of CrVI Coating;
(The tested sample should be further verified by boiling-water-extraction method if the spot result cannot be confirmed.)
 - (6) "--" = Not applicable
 - (7) "<" = Less than
 - (8) Test company: SGS = SGS group
CTI = CTI group

Appearance Photo 1 of Sample

EUT - View



EUT -View

